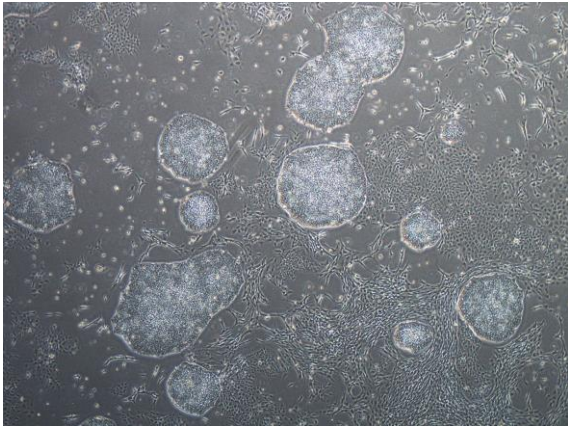
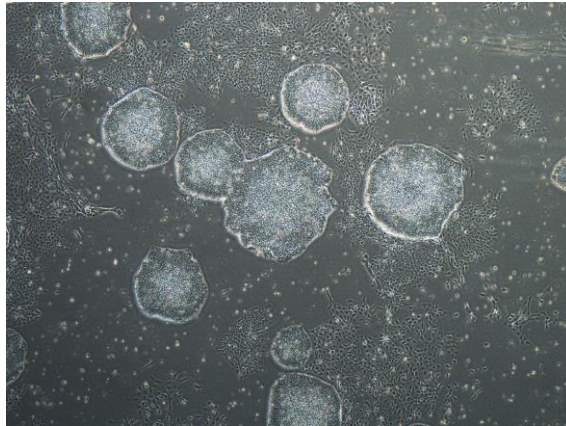


【 CiRA-j-1391 】 Morphology of iPSC colonies

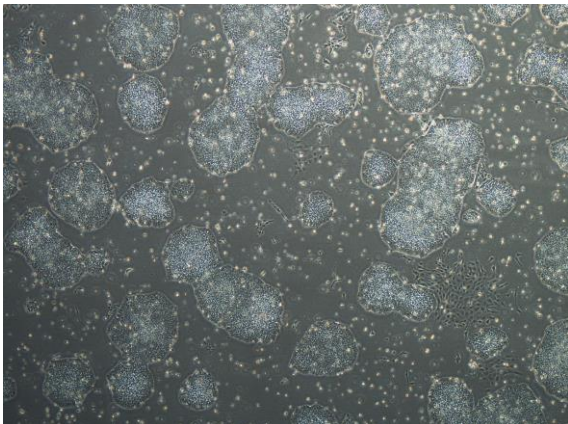
CiRA-j-1391-A: passage-3



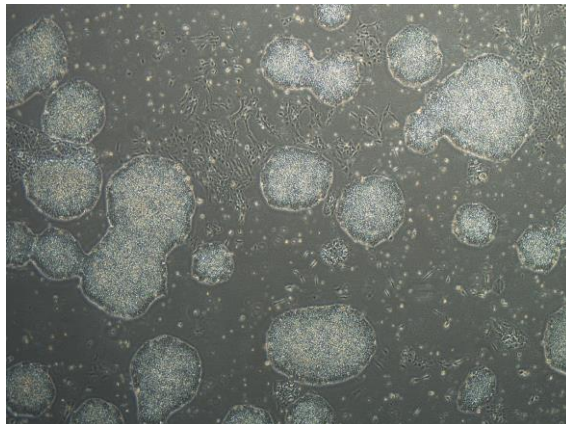
CiRA-j-1391-B: passage-3



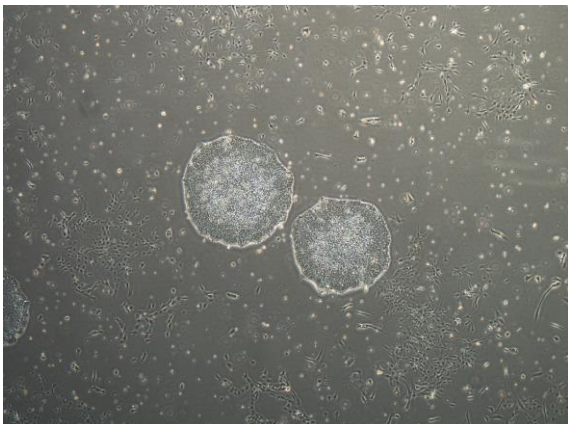
CiRA-j-1391-C: passage-3



CiRA-j-1391-D: passage-3



CiRA-j-1391-E: passage-3



CiRA-j-1391-F: passage-3



(All images were captured at 4x magnification)